

1025 W OLYMPIA DRIVE

PEORIA, IL 61615



RE/MAX
COMMERCIAL®
TRADERS UNLIMITED

FOR LEASE | 1025 W. OLYMPIA DRIVE

ASKING RATE: \$8.50/SF NNN



EXECUTIVE SUMMARY

The O'Bryan & Ball Team at REMAX Traders Unlimited has been exclusively retained to Lease Suite C at 1025 W. Olympia Drive, a 7,633 SF industrial unit in the North Peoria/Pioneer Industrial Park in Peoria, IL. This superb space features over 7,000SF of open warehouse space and contains a small office/retail space. The warehouse has two 8' x 8' dock doors, two 12'H x 14'W overhead doors, and ceiling clearspan heights ranging from 11' 8" to 16' 8". The property has ample parking spaces, room for trucks entering/exiting & docking, and several fenced-in, outdoor storage areas available.

The unit is leased through Sept 2025 and will be available October 1, 2025.



7,633
TOTAL SF



\$8.50
PRICE /SF



16' 8"
CEILING
HEIGHT



I-1
ZONING

CLICK FOLDER FOR LINK TO

- Property Photos & Videos
- Floorplans
- County Records



MIKE O'BRYAN
309.323.0399

JUSTIN BALL
JUSTIN.BALL@REMAX.NET
309.323.0399

JESSICA BALL
JESSICABALL@REMAX.NET
309.363.2929

MICHAEL KOLBUS
MKOLBUS@REMAX.NET
309.258.7746

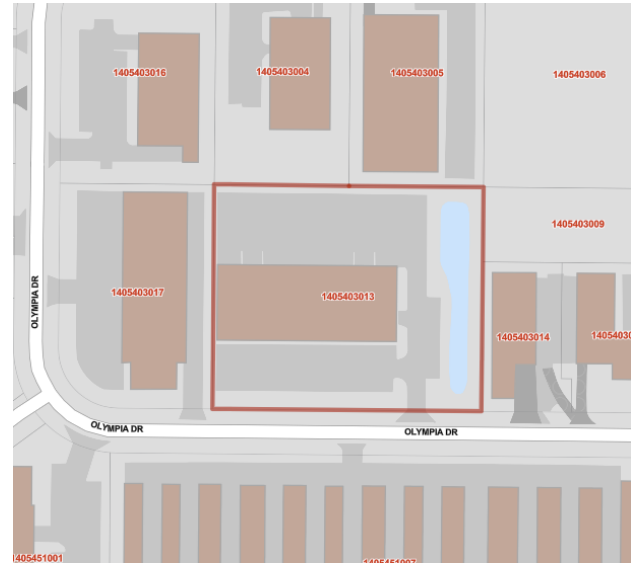
RE/MAX
COMMERCIAL
TRADERS UNLIMITED

FOR LEASE | 1025 W. OLYMPIA DRIVE

PROPERTY INFORMATION

ADDRESS	1025 W. Olympia Drive
CITY / STATE / ZIP	Peoria, IL 61615
PARCEL ID(S)	14-05-403-013
PROPERTY TYPE	Industrial
TOTAL BUILDING SIZE	23,212 SF
TOTAL BUILDING UNITS	3
ZONING	I-1
YEAR BUILT	2000

AVAILABLE SF **7,633 SF**



MIKE O'BRYAN
309.323.0399

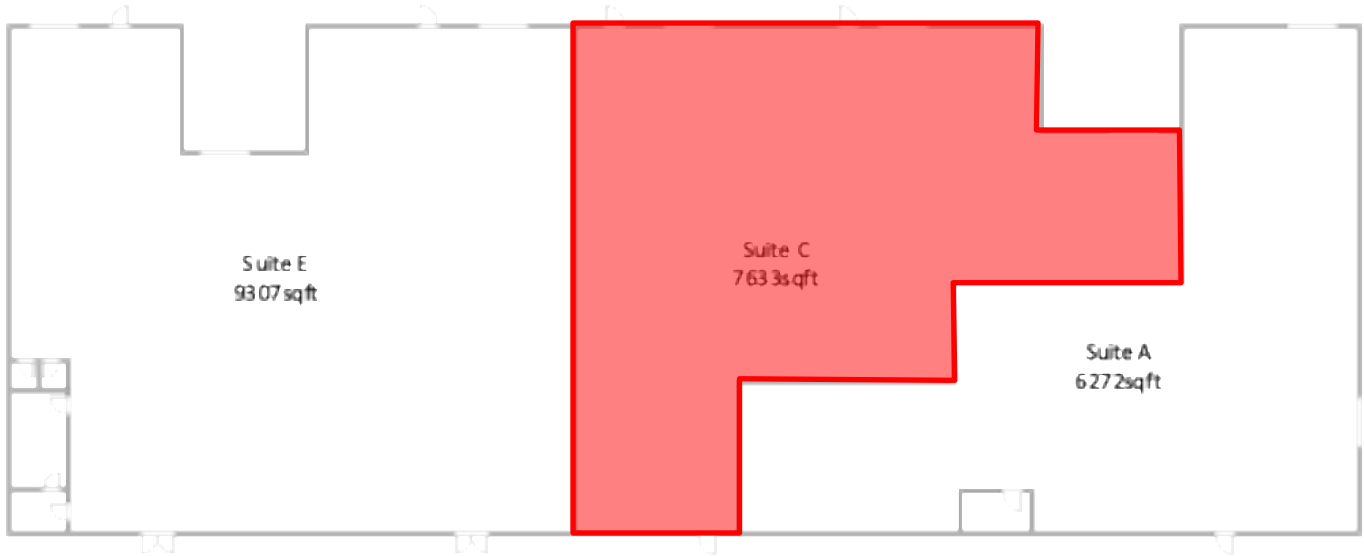
JUSTIN BALL
JUSTIN.BALL@REMAX.NET
309.323.0399

JESSICA BALL
JESSICABALL@REMAX.NET
309.363.2929

MICHAEL KOLBUS
MKOLBUS@REMAX.NET
309.258.7746

RE/MAX
COMMERCIAL
TRADERS UNLIMITED

GIS SKETCH



MIKE O'BRYAN
309.323.0399

JUSTIN BALL
JUSTIN.BALL@REMAX.NET
309.323.0399

JESSICA BALL
JESSICABALL@REMAX.NET
309.363.2929

MICHAEL KOLBUS
MKOLBUS@REMAX.NET
309.258.7746

FOR LEASE | 1025 W. OLYMPIA DRIVE

EXTERIOR PICTURES



MIKE O'BRYAN
309.323.0399

JUSTIN BALL
JUSTIN.BALL@REMAX.NET
309.323.0399

JESSICA BALL
JESSICABALL@REMAX.NET
309.363.2929

MICHAEL KOLBUS
MKOLBUS@REMAX.NET
309.258.7746

RE/MAX
COMMERCIAL
TRADERS UNLIMITED

FOR LEASE | 1025 W. OLYMPIA DRIVE

EXTERIOR PICTURES



MIKE O'BRYAN
309.323.0399

JUSTIN BALL
JUSTIN.BALL@REMAX.NET
309.323.0399

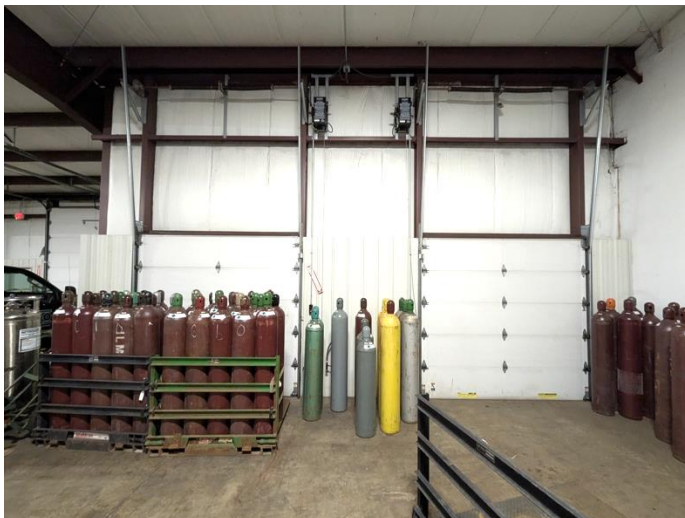
JESSICA BALL
JESSICABALL@REMAX.NET
309.363.2929

MICHAEL KOLBUS
MKOLBUS@REMAX.NET
309.258.7746

RE/MAX
COMMERCIAL
TRADERS UNLIMITED

FOR LEASE | 1025 W. OLYMPIA DRIVE

INTERIOR PICTURES



MIKE O'BRYAN
309.323.0399

JUSTIN BALL
JUSTIN.BALL@REMAX.NET
309.323.0399

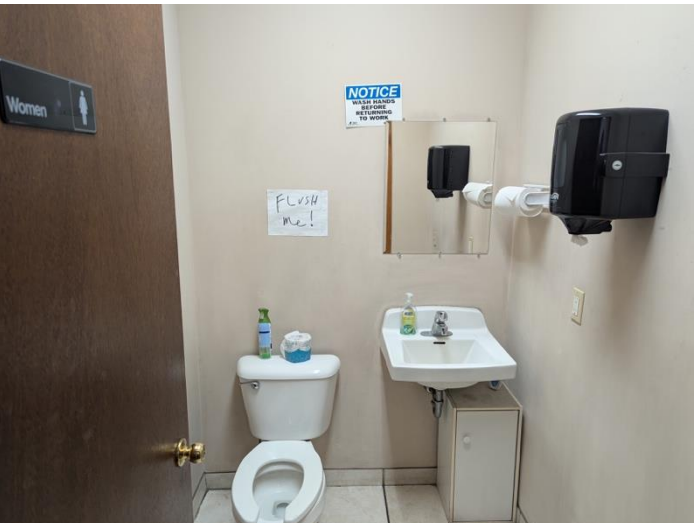
JESSICA BALL
JESSICABALL@REMAX.NET
309.363.2929

MICHAEL KOLBUS
MKOLBUS@REMAX.NET
309.258.7746

RE/MAX
COMMERCIAL
TRADERS UNLIMITED

FOR LEASE | 1025 W. OLYMPIA DRIVE

INTERIOR PICTURES



MIKE O'BRYAN
309.323.0399

JUSTIN BALL
JUSTIN.BALL@REMAX.NET
309.323.0399

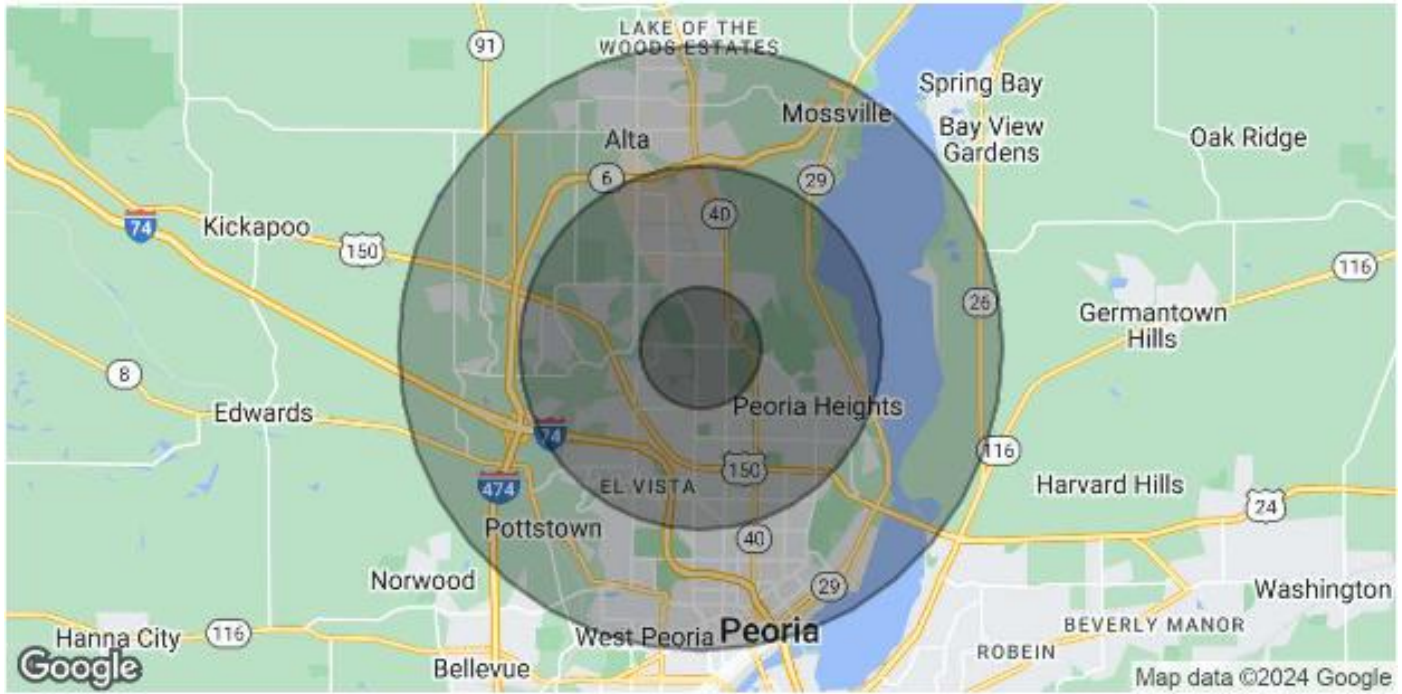
JESSICA BALL
JESSICABALL@REMAX.NET
309.363.2929

MICHAEL KOLBUS
MKOLBUS@REMAX.NET
309.258.7746

RE/MAX
COMMERCIAL
TRADERS UNLIMITED

FOR LEASE | 1025 W. OLYMPIA DRIVE

AREA DEMOGRAPHICS



POPULATION	1 MILE	3 MILES	5 MILES
Total Population	7,961	56,008	112,408
Average Age	43	42	40
Average Age (Male)	41	40	38
Average Age (Female)	45	44	41

HOUSEHOLDS & INCOME	1 MILE	3 MILES	5 MILES
Total Households	3,613	25,801	48,171
# of Persons per HH	2.2	2.2	2.3
Average HH Income	\$81,064	\$79,136	\$84,840
Average House Value	\$184,218	\$167,525	\$177,845

Demographics data derived from AlphaMap

MIKE O'BRYAN
309.323.0399

JUSTIN BALL
JUSTIN.BALL@REMAX.NET
309.323.0399

JESSICA BALL
JESSICABALL@REMAX.NET
309.363.2929

MICHAEL KOLBUS
MKOLBUS@REMAX.NET
309.258.7746

RE/MAX
COMMERCIAL
TRADERS UNLIMITED



1025 W. OLYMPIA
PEORIA, IL 61615

RE/MAX
COMMERCIAL[®]

TRADERS UNLIMITED



MIKE O'BRYAN
President; RE/MAX Commercial
Lic #471.006473



JUSTIN BALL
Broker, REALTOR
Tel: (309) 323-0399
Justin.Ball@Remax.net
Lic #475.175281



JESSICA BALL
Broker, REALTOR
Tel: (309) 363-2929
JessicaBall@Remax.net
Lic #475.175281



MICHAEL KOLBUS
Broker, REALTOR
Tel: (309) 258-7746
MKolbus@Remax.net
Lic #475.213462

All information contained herein is deemed reliable but not guaranteed.
Each office is independently owned and operated.
Office: 3622 N Knoxville Avenue, Peoria, IL 61603